



STRONGER THAN EVER



| VEHICLES

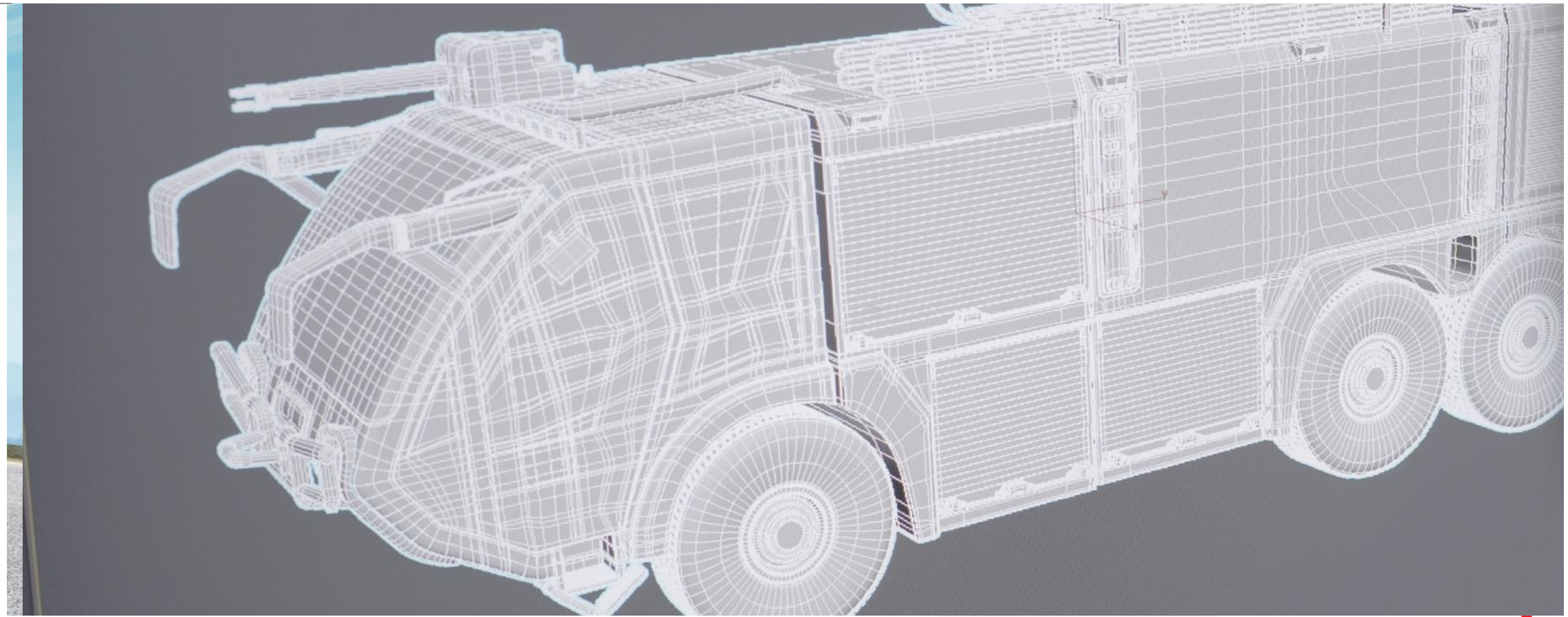


INTRODUCTION

NAFFCO is the leading supplier of fire trucks and vehicles in Dubai and the MENA region. All fire vehicles supplied by our company have been constructed to the highest standards and will enable you to respond quickly to fires regardless of your environment. Our fire fighting trucks and vehicles are suitable for combating fires in airports, domestic and commercial buildings and more. We have established a reputation as one of the top fire manufacturers in the world due to the quality of our

fire fighting apparatus and fire fighting equipment. It is known that we supply the best fire trucks and vehicles. In our range, we have new fire trucks, fire tankers and many more. In addition to our fire fighting trucks, we can supply a rescue truck, truck engine and other fire department equipment to meet all of your requirements. If you want to fight fires effectively then you need the best fire trucks which our company supplies.





ENGINEERING

NAFFCO's extensive experience of firefighting systems and applications acquired over the last 25 years has been instrumental in the establishment and rapid development of the trucks division.

The division is supported by our state-of-the-art technology and software allowing for extensive research and development into optimum configurations for maximum space utilization, engine power performance, on road efficiency and safety/security features. NAFFCO has a qualified R&D team to incorporate latest technologies and trends in the field. These powerful in-house resources have enabled our engineers to simulate designs in both static and dynamic views while paying particular attention to load displacement to ensure a reliable vehicle both on-road and off-road depending on the required application.

“The division is supported by our state-of-the-art technology and software allowing for extensive research and development into optimum configurations for maximum space utilization”

MANUFACTURING

NAFFCO promotes fire safety and security by providing innovative life solutions all under one roof. Since its humble beginnings, NAFFCO has grown from its headquarters in Dubai, UAE to expand to over 100 countries around the world.

NAFFCO is among the world's leading producers and suppliers of top-tier firefighting trucks and vehicles. All firefighting vehicles supplied by our company have been constructed by the highest safety standards. Our vehicles will enable you to respond quickly and efficiently to fire emergencies regardless of your environment while offering maximum security and mobility during the operations.

We have established a reputation as one of the top firefighting manufacturers in the world due to the quality of our firefighting apparatus and equipment. Our firefighting trucks and vehicles are suitable for effectively combating fires in airports, domestic, commercial buildings and all other hard-to-reach terrains.

In our range, we have ARFF Vehicles on Custom Built Chassis and Commercial Chassis, Municipal Firefighting Vehicles, Industrial Firefighting Vehicles, Rescue and Rapid Intervention Vehicles, Aerials for Rescue & Firefighting, Aerials & Vehicles for Electrical Sector, Electric Vehicles and other Special Purpose Vehicles.

Our Trucks & Vehicles division has been assessed & certified for the Quality Management System requirement for Aviation, Space & Defense organization (AS 9100) by UL-DQS. Our Vehicles are built to meet the requirements of fast intervention in case of emergency exceeding the applicable standard NFPA 414 and ICAO regulations. They are tested in accordance with ECE R29.

Fight Fire effectively with NAFFCO!







QUALITY CONTROL

To empower customers to secure Life, Property and Business by delivering high quality and innovative fire protection solution using world class manufacturing process with the finest engineering technology.

NAFFCO is committed for working towards continuous improvement with the aim of meeting with customer requirements and expectations.

“NAFFCO is committed for working towards continuous improvement with the aim of meeting with customer requirement & expectations”



STRONGER THAN EVER

AFTER-SALES DEPARTMENT

- NAFFCO, not only offers a product, but also back-up what we sell with full servicing, maintenance and training options
- We have a separate department totally dedicated for maintenance of Firefighting Systems and Equipment.
- We offer the service of our Engineers and Technicians round the clock (24 hours) for emergency requirements.
- Further, we also undertake annual and half-yearly maintenance contracts, which will ensure the smooth functioning of the various Firefighting System and Equipment throughout the year.

“ We will ensure smooth functioning of the various vehicles & equipment throughout the year ”

**AIRCRAFT RESCUE &
FIREFIGHTING VEHICLE
ON CUSTOM BUILT
CHASSIS**



Falcon - 8

FALCON SERIES

- ARFF FALCON series are the right choice for airport firefighting and rescue; these vehicles are built to meet the requirements of fast intervention in case of emergency exceeding the applicable standard NFPA 414 and ICAO regulations.
- Chassis options American or European origin.
- Cabin is custom built with center, center right or center left steering, tested in accordance with ECE R29.
- Tank, cabin and body covers made of Glass Reinforced Polyester (GRP)/IPP/ All proven corrosion resistant material ABS.
- 9137 ICAO specified equipment based on airport category are available at request.
- Automatic Around the Pump Foam system. UL Classified provided as standard.
- NAFFCO developed narrow version of FALCON 6 of 2.5 Meters.



STRONGER THAN EVER

AIRCRAFT RESCUE & FIREFIGHTING VEHICLE ON CUSTOM BUILT CHASSIS

Model	Drive	Min. HP	Water Tank (L)	Foam Tank (L)	Fire Pump Capacity (LPM@10 bar)	GVW (T)
Falcon-4	4x4	500	6500	780	6000-10000	24
Falcon-6	6x6	650	12500	1500	6000-10000	36
Falcon-8	8x8	900	16000	1920	6000-10000	52

*Note - GVW values may differ based on equipments re-tested.
- Conversion available upon request.

AIRPORT RESCUE & FIREFIGHTING VEHICLE ON COMMERCIAL CHASSIS



NF - ARFF - 6

A COST-EFFECTIVE SOLUTION FOR AIRPORT FIREFIGHTING & RESCUE

- A cost-effective solution for Airport Rescue and Firefighting Vehicles, these units are built on commercial chassis from reputed manufacturers as Scania, Mercedes-Benz, MAN.
- Original chassis cabin is converted to crew cabin with right or left steering, tested in accordance with ECE R29.
- Tanks options of Glass Reinforced Polyester (GRP), Polypropylene or SS 316L
- ICAO specified equipments based on airport category are available at request.
- Automatic Around the Pump Foam system. UL Classified provided as standard.



STRONGER THAN EVER

AIRPORT RESCUE & FIREFIGHTING VEHICLE ON COMMERCIAL CHASSIS

Model	Drive	Min. HP	Cabin	Water Tank (L)	Foam Tank (L)	Fire Pump Capacity (LPM@10 bar)
NF-ARFF-4	4x4	480	Double	4100	500	3,000-4,000
NF-ARFF-6	6x6	580	Double	9000	1080	4,000-6,000

MUNICIPAL FIREFIGHTING VEHICLES



DESIGNED FOR INTERVENTION MAINLY WITHIN THE CITY LIMITS



- Designed for intervention mainly within the city limits, NAFFCO municipal fire trucks are categorized as light (up to 12T GVW), medium (12 to 18 T GVW) and heavy duty (over 18 T GVW) Firefighting Vehicles.
- Chassis options as Scania, Mercedes-Benz, MAN, International, Renault, Iveco. Others can be used based on engineering assessment.
- Cabin can be single or double cabin subject to chassis selection.
- Tanks options of Glass Reinforced Polyester (GRP), Polypropylene or SS 316L
- Equipments are available upon request .
- Manual or Automatic Around the Pump Foam system being provided.
- Monitor with electric or manual control.
- High pressure hose reel with electric rewind available on selected models.
- NFMR series of municipal vehicles are prepared for any emergency situation. They are able to carry hydraulic rescue tools, electrical generator, power tools, SCBA, hoses, nozzles and many others. The bodyworks can be supplied in Aluminum or Polypropylene.

MUNICIPAL FIREFIGHTING VEHICLES

Model	Drive	Min. HP	Cabin	Water Tank (L)	Foam Tank (L)	Fire Pump Capacity (LPM@10 bar)	GVW (T)
NFM-40/4-SC	4x2	170	Single	4000	400	2000	12
NFM-60/0-SC	4x2	240	Single	6000	0	2000	18
NFMR-40/4-DC/AL	4x2	240	Double	4000	400	3000	18
NFMR-45/5-DC/PP	4x2	240	Double	4000	500	3000	18
NFM-60/5-DC	4x2	240	Double	6000	500	3000	18
NFM-100/10-DC	6x4	310	Double	10000	1000	4000	33
NFM-120/12-SC	6x4	360	Single	12000	1200	4000	33
NFM-150/4-SC	6x4	360	Single	15000	400	4000	33

*Other Configurations available upon request.

INDUSTRIAL FIREFIGHTING VEHICLES



FOR PROTECTION OF INDUSTRIAL ASSETS

- For protection of industrial assets NAFFCO provides a complete range of vehicles able to carry large amounts of foam, dry powder and water. The chassis are provided with safety features as spark arresters and engine shut off valves, in line with the internal regulations of the industrial sector.
- Chassis commonly used are Mercedes-Benz, MAN, Iveco, International or Freightliner.
- Cabin can be single or double cabin subject to chassis selection.
- Tanks options of Glass Reinforced Polyester (GRP), Polypropylene or SS 316L.
- Equipments are available upon request.



- Foam systems are highly accurate balanced pressure or electronic injection type.
- Monitors with electric or manual control dual or triple agent can be provided.
- High pressure hose reel with electric rewind available on selected models.
- Water towers with heights up to 72 meters can be installed on selected models.

INDUSTRIAL FIREFIGHTING VEHICLE

Model	Drive	Min. HP	Cabin	Water Tank (L)	Foam Tank (L)	Fire Pump Capacity (LPM@10 bar)	GVW (T)
NFI-30/30-DC	6x4	310	Double	3000	3000	4000	27
NFI-50/50-DC	6x4	310	Double	5000	5000	6000	31
NFI-60/60-SC	6x4	390	Single	6000	6000	6000	33
NFI-0/11-DC	6x4	390	Double	N/A	11000	10000	33
NFI-0/22-SC	6x4	480	Single	N/A	22000	N/A	41
NFI-50/60-DC	6x6	540	Double	4000	6000	10,000	33
NFI-30/60-SC	6x4	500	Single	3000	5000	11,000	33

**Other Configurations available upon request.*

RESCUE AND RAPID INTERVENTION VEHICLE



NECESSARY FOR ROAD OR AIRPORT FAST INTERVENTION

- NAFFCO Rescue and Rapid Intervention Vehicles are specifically designed for the application necessary for road or airport fast intervention. They can feature extrication tools, firefighting systems water/ foam based, DCP or CO₂ well as medical equipments.
- Standard construction Aluminium modular technology, they are also available in full PP bodies.
- Chassis cabs or VAN type from reputed manufacturers : GMC, Ford, Mercedes-Benz, Iveco.
- Cabin can be single or double cabin.
- Tanks options of Glass Reinforced Polyester (GRP), Polypropylene or SS 316L.
- Equipments are available upon request.
- Normal pressure or high pressure firefighting systems can be installed.



STRONGER THAN EVER

RESCUE AND RAPID INTERVENTION VEHICLE

Model	Drive	Min.HP	Water Tank (L)	Foam Tank (L)	Fire Pump Capacity (LPM@10 bar)
NF-RIV-300	4x2 4x4	100	300	30	42 @ 100 Bar
NF-RIV-500	4x2 4x4	110	500	50	1500 @ 10 Bar
NF-RIV-1000	4x2 4x4	140	1000	100	1500 @ 10 Bar
NF-RIV-2000	4x2 4x4	140	2000	200	1500 @ 10 Bar

**Other Configurations available upon request.*



**HYDRAULIC ACCESS
PLATFORMS FOR
FIREFIGHTING**



WHERE THE INTERVENTION REQUIRES ACCESS TO HEIGHTS

- Where the intervention requires access to heights, NAFFCO provides a full range of aerial platforms and turntable ladders that can reach up to 72 mtr. Height.
- The platforms are EN 1777 compliant and options of water / foam tanks, foam system, monitor are available. Can be customized for both municipal as well as industrial applications.
- Chassis options: Volvo, MAN, Iveco, Mercedes-Benz, Renault.



TURNTABLE LADDERS

Model	Drive	Minimum HP	Cabin	Working Height
NF-TTL-32	6 x 4	360	Single	32
NF-TTL-46	8 x 4	360	Single	46
NF-TTL-52	8 x 4	480	Single	52

* Water Towers up to 72 mtr available upon request.

HYDRAULIC PLATFORMS

Model	Drive	Minimum HP	Cabin	Working Height
NF-ALP-295	4x2 / 6x4 4x4 / 6x6	280	Single	29.5
NF-ALP-330	6 x 4	360	Single / Double	33
NF-ALP-375	6 x 4	400	Single / Double	37.5
NF-ALP-444	6 x 4 / 8 x 4	480	Single	44
NF-ALP-555	8 x 4	480	Single	55
NF-ALP-727	8 x 4	480	Single	72



HAZMAT VEHICLES



COMPLETE SOLUTION FOR HAZMAT OPERATION

- Hazmat Response Vehicles may vary in size and color, but, its mission always involves mitigation and the requirement to transport a lot of bulky equipment is imperative.
- To effectively do that our new developed hazmat truck with deep compartment storage facilities, storing the heavy and bulky equipment such as over pack drums, inflatable tents, environmental systems and other equipment required to be stored, for the hazmat or chemical hazardous areas, our unit will suit your needs.
- Each unit is particularly designed for the purpose and takes in consideration the special requirements of the customer.

DEFENCE/COMMAND VEHICLES



ANTI RIOT VEHICLE - ARMoured CABINS

- This car used for the purposes disperse the demonstrators and anti-riots it can be on a small chassis such as Ford or GMC or be on a large trucks, these trucks can carry larger quantities of water and anti- riot equipment, and all the aspects of an armoured car with surveillance cameras and control devices



COMMAND/RESCUE VEHICLE

- Latest wireless communication devices connected to the Central Operation Control room 24/7.
- Advance CCTV monitoring device which is working in a daytime and night vision under all weather conditions.
- Customized Rescue equipment installed.
- Office and meeting room Equipped with all kind of office equipment (Computer, Printer, Fax, Etc).

SPECIAL PURPOSE VEHICLES





NEW DEVELOPMENT EMERGENCY VEHICLE

- Command units, rescue and incident command support units, canine carriers, hazmat trucks, lighting vehicles or cash in transit units are only a few of the custom built vehicles that NAFFCO is producing.
- Each unit is particularly designed for the purpose and takes into consideration the special requirements of the customer.

SERVICE VEHICLES

CUSTOMIZED & CUSTOMER SPECIFIC SOLUTION VEHICLE CONCEPT



LIGHTING VEHICLE

- Carries metal halide/LED lamps that are powered by the on-board generator. By lighting up the emergency scene, it enables firefighting and rescue operations at night.



MOBILE WORKSHOP

- Special robust design, practical and lightweight with the Storage Cabinets and Side Access for the equipment, the vehicle is ready to be furnished with all necessary tools required to carry out in the field.

STRONGER THAN EVER



CERTIFICATES

NAFFCO Vehicles Division maintain Quality, Environmental and Safety Management Systems. Compliance to AS 9100C ensures that there is a robust design process to meet safety and reliability requirements to the standards of the aerospace industry and that each phase of product realization, from planning to

shipment, is tightly controlled for delivery of conforming product. It also ensures adequate Product Monitoring and Measurement that defines requirements for product validation prior to shipment.



CERTIFICATE



This is to certify that



National Fire Fighting Manufacturing FZ Co (NAFFCO)

Trucks & Vehicles Division
Plot No. S30201
Jebel Ali Free Zone
Dubai - 17014
UAE

has implemented and maintains an **Environmental Management System**

Scope:

The Environmental activities and supporting process, associated with the Design, Manufacturing, Equipping, Commissioning, Maintenance & Servicing of Fire Trucks, ARFF Vehicles, Aerial Platforms & Ladders, Ambulance Vehicles, Rescue Vehicles, Airport Ground Support Equipment, Extendable Trailers, Generator Vehicles, Transmission Live Line Maintenance Vehicles, Extendable Mobile Hospital and Mobile Medical Truck & other Specialised Vehicles.

Manufacturing of chassis.

Through an audit, documented in a report, it was verified that the management system fulfills the requirements of the following standard:

ISO 14001 : 2015

Certificate registration no.	50250955 UM
Excerpt from certificate registration no.	20002009 UM
Date of original certification	2015-01-15
Date of certification	2020-03-20
Valid until	2023-03-19



DQS Inc.

Brad McGuire

Brad McGuire
Managing Director

Accredited Body: DQS Inc., 1500 McCormick Parkway, Suite 400, Schaumburg, IL 60173 USA
Administrative Office: Deutsch Quality Systems (India) Pvt. Ltd., 5th Floor, Anjaneys Techno Park,
147, HAL Airport Road, Kochin, Bangalore - 560 017 - India



Ford Motor Company

Is proud to recognize

Naffco Fzco.

as a participant in the

Ambulance

Qualified Vehicle Modifier Program

Randy M. Forburger - SVE Quality Programs Mgr.

May, 2013



FORD CERTIFIED CHASSIS MODIFIER



Serving Over 100 Countries Worldwide

NAFFCO

Email: info@naffco.com
www.naffco.com

In line with NAFFCO policy for continuous product development,
NAFFCO has the right to change specifications without prior notice.