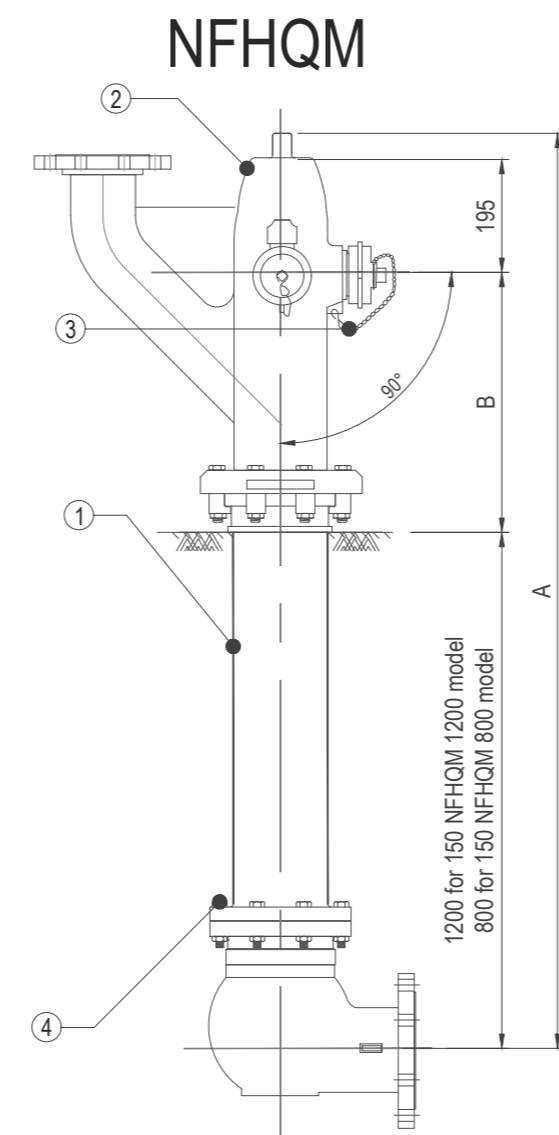
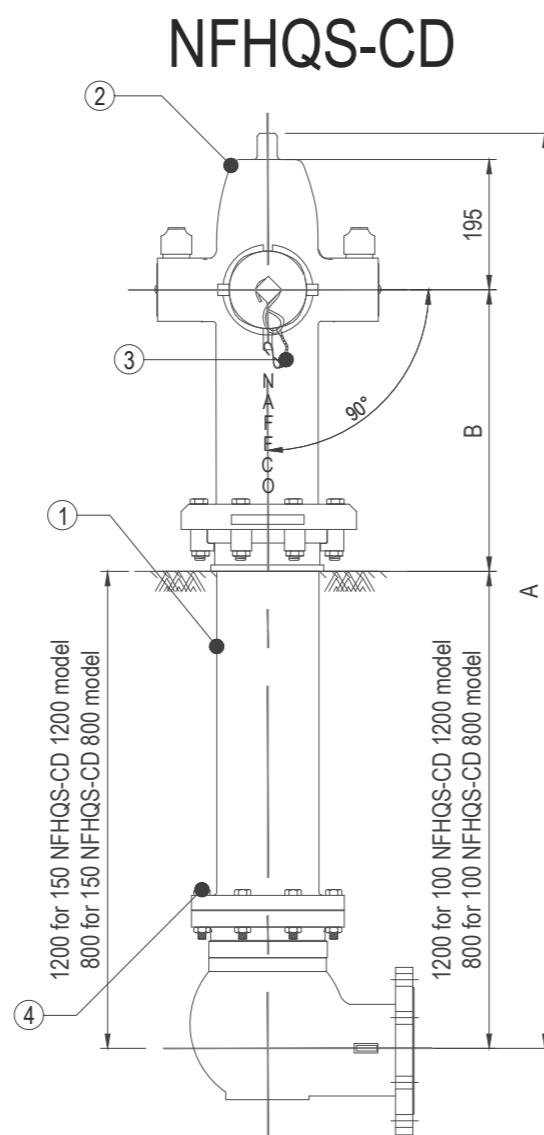
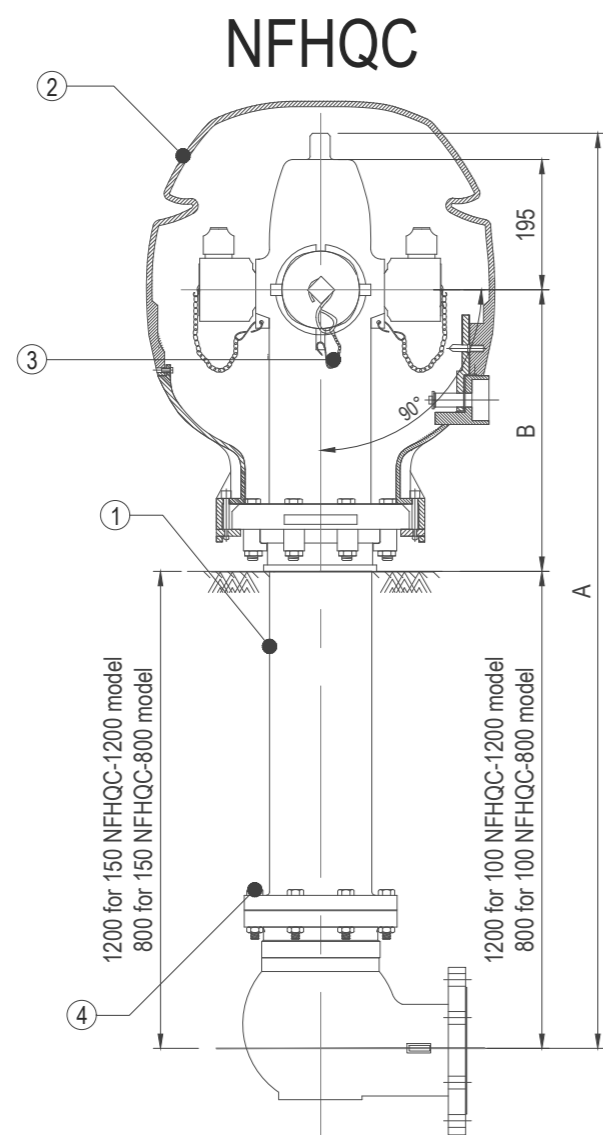
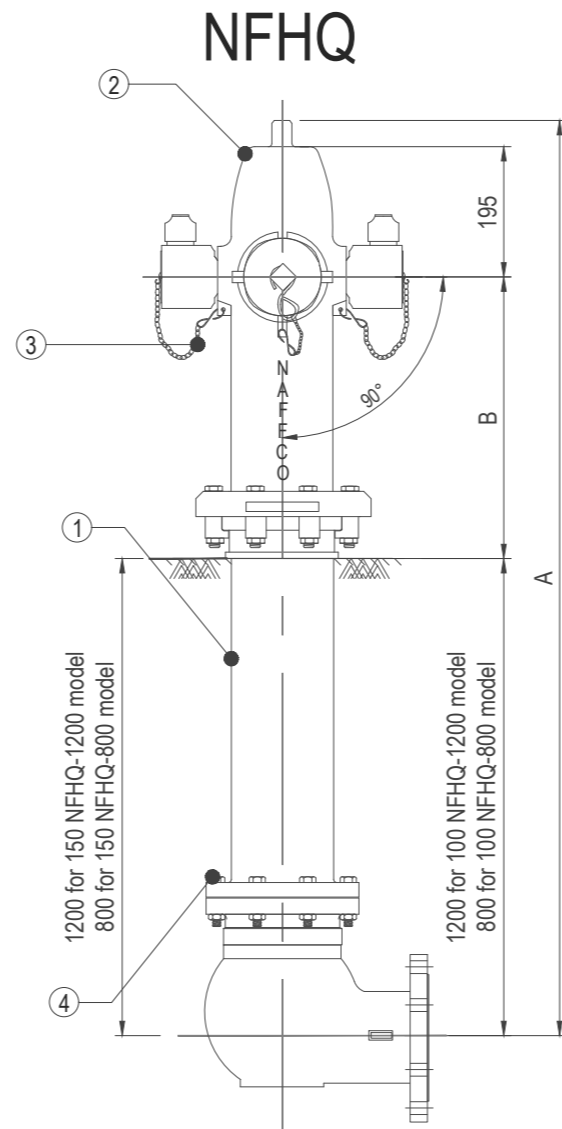
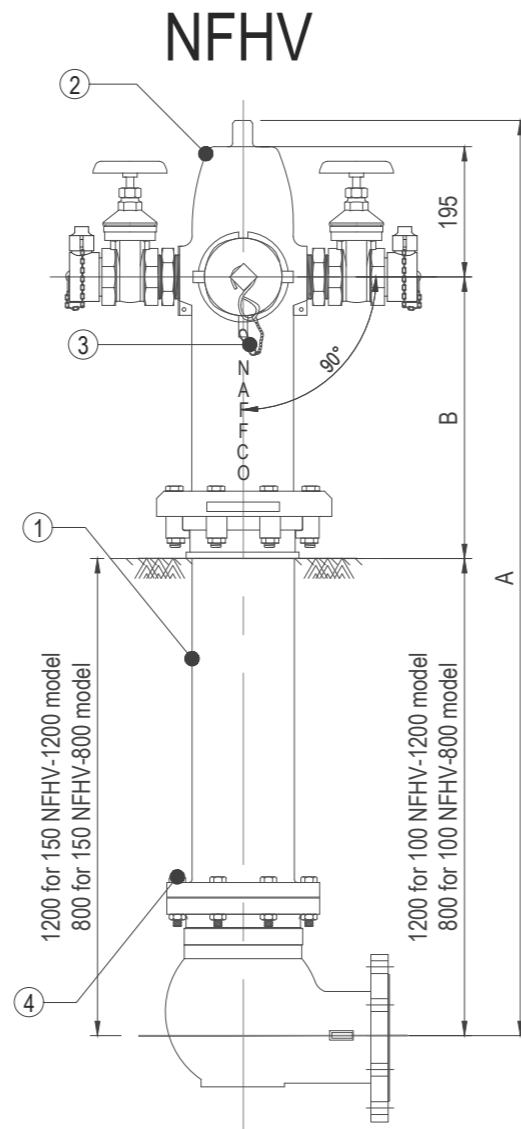
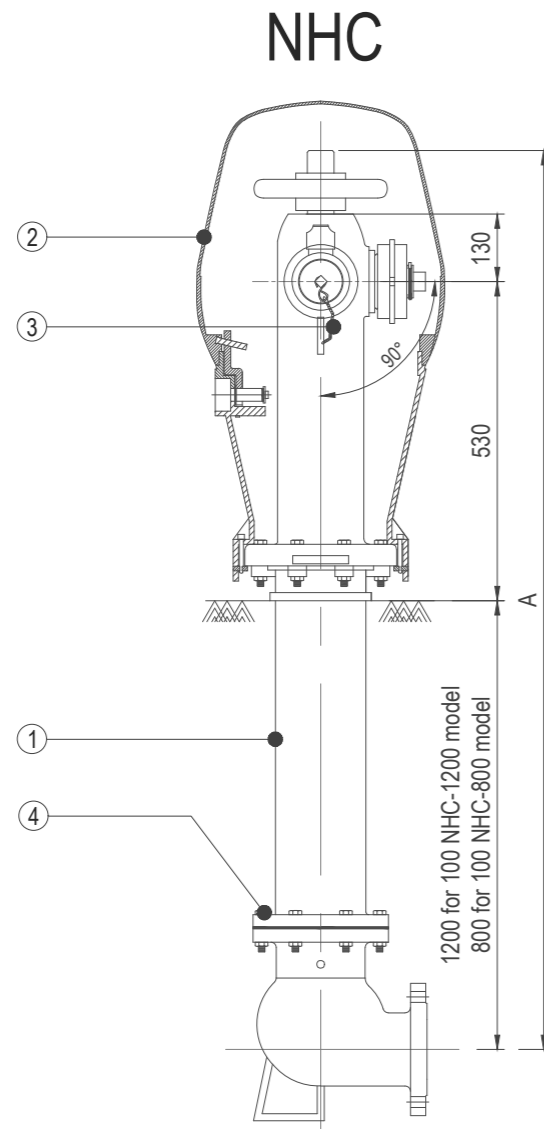
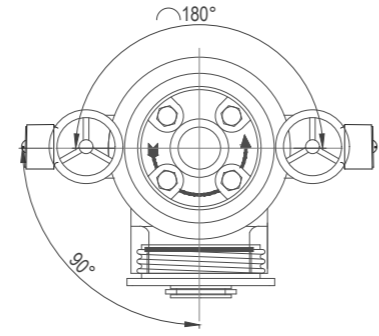


HYDRANTS



NOTES :-

1. ALL DIMENSIONS ARE IN mm. UNLESS OTHERWISE SPECIFIED

BILL OF MATERIALS

ITEM. NO	DESCRIPTION	MATERIAL
1	BARREL	CAST IRON
2	HOOD COVER	ALUMINIUM ALLOY
3	CONNECTOR CAP CHAIN	BRONZE
4	BOLT&NUT OF BOTTOM BARREL	FORGED STEEL/STAINLESS STEEL

DIMENSIONS

SL NO.	MODEL	INLET FLANGE SIZE IN INCH(DN)	A	B	WORKING PRESSURE
NHC SERIES					
1	100 NHC-800	4(100)	1515	530	16
2	100 NHC-1200	4(100)	1915	530	16
NFHV SERIES					
1	100 NFHV-800	4(100)	1450	430	16
2	100 NFHV-1200	4(100)	1850	430	16
3	150 NFHV-800	6(150)	1500	480	16
4	150 NFHV-1200	6(150)	1900	480	16
NFHQ SERIES					
1	100 NFHQ-800	4(100)	1450	430	16
2	100 NFHQ-1200	4(100)	1850	430	16
3	150 NFHQ-800	6(150)	1500	480	16
4	150 NFHQ-1200	6(150)	1900	480	16
NFHQC SERIES					
1	100 NFHQ-C-800	4(100)	1450	430	16
2	100 NFHQ-C-1200	4(100)	1850	430	16
3	150 NFHQ-C-800	6(150)	1500	480	16
4	150 NFHQ-C-1200	6(150)	1900	480	16
NFHQS-CD SERIES					
1	100 NFHQ-S-CD-800	4(100)	1450	430	16
2	100 NFHQ-S-CD-1200	4(100)	1850	430	16
3	150 NFHQ-S-CD-800	6(150)	1500	480	16
4	150 NFHQ-S-CD-1200	6(150)	1900	480	16
NFHQM SERIES					
1	150 NFHQ-M-800	6(150)	1500	480	16
2	150 NFHQ-M-1200	6(150)	1900	480	16