

Automatic Fire Curtain **Melodeon**



NAFFCO Melodeon Fire Curtain systems prevent the spreading of fire from one area to another. The Curtain assembly comprises fire-rated fiberglass fabric uniquely folded into a compact head box that is typically installed above the ceiling with a finished bottom tray. This makes the system virtually invisible until activated. The curtain descends at a controlled speed upon receipt of signal from a fire alarm and provides fire integrity for up to four hours*.

We are constantly developing and enhancing our fire curtains to ensure compliance with the latest standards and regulations.

Advantages

- An ideal solution for buildings with large open spaces.
- Lightweight & Compact design, low head room requirements.
- Unlimited width, custom sizes and layouts.
- Manufactured with intricacy using advanced machinery.
- Meeting Bespoke requirements.
- Do not require any columns or corner posts
- Guaranteed Gravity Fail Safe (no power needed).

Applications

Elevator Halls, Atriums, Escalators, and Other void areas.

*NF-WRGF0667/120

System tested to

- UL10D
- NFPA 252
- BS 476 part 6 & Part 7 (Fabric)

Compliance

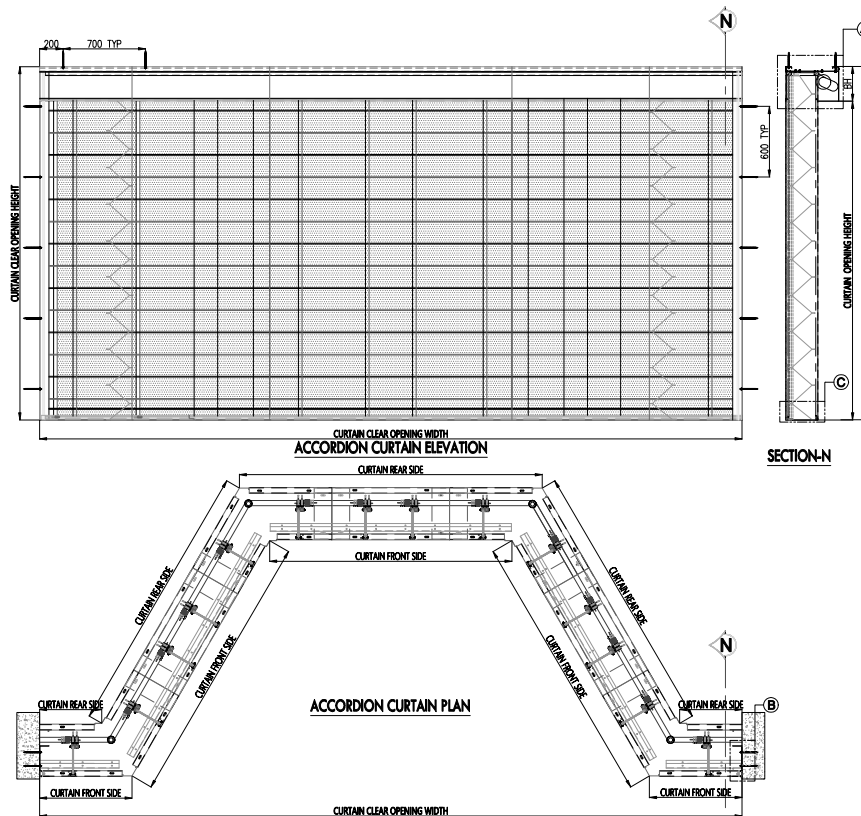
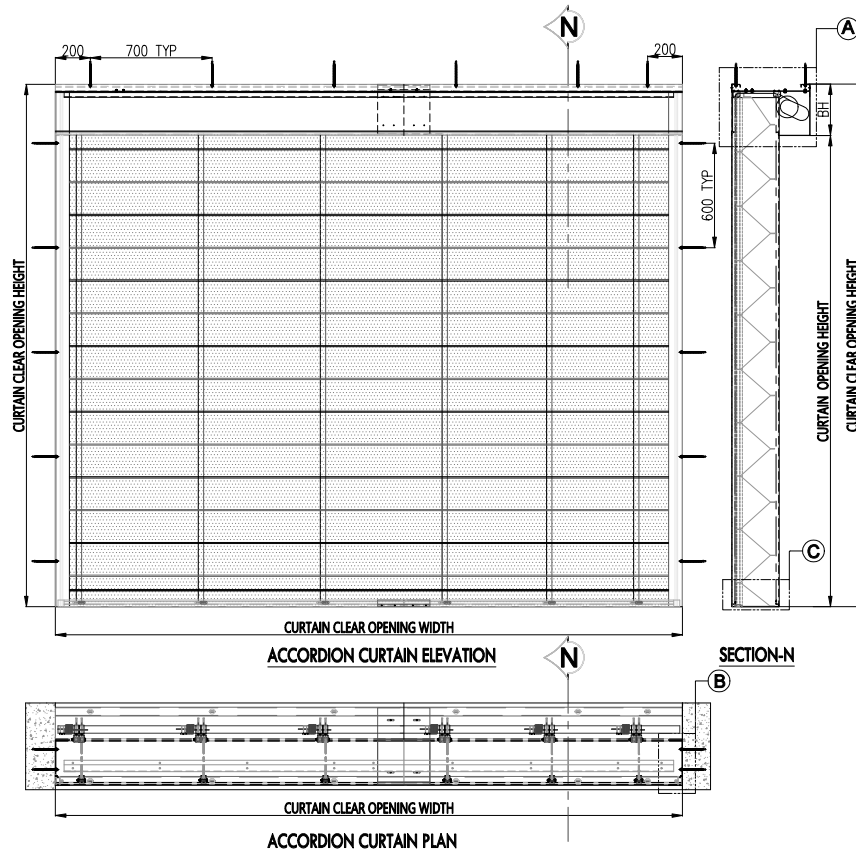
- NFPA 80
- UL

Fire Integrity

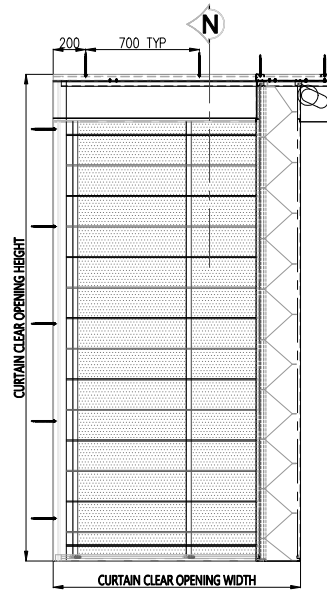
- Up to 240 min.



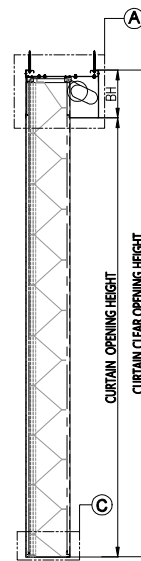
Automatic Fire Curtain Melodeon



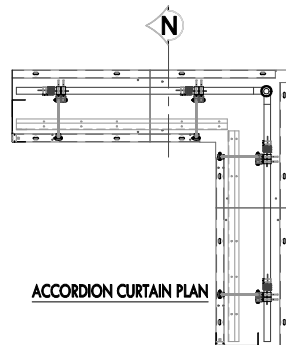
Automatic Fire Curtain Melodeon



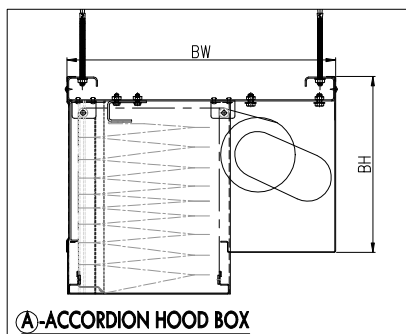
ACCORDION CURTAIN ELEVATION



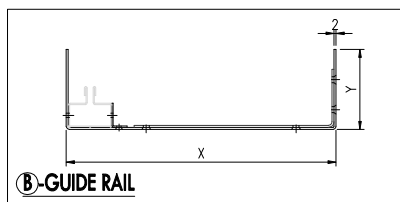
SECTION-N



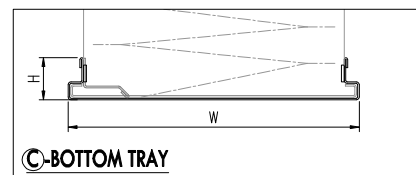
ACCORDION CURTAIN PLAN



A-ACCORDION HOOD BOX



B-GUIDE RAIL



C-BOTTOM TRAY