

Automatic Smoke Curtain

Single & Multi Barrel



Smoke Curtain

Single & Multi Barrel



Max. Height	Max. Width	D	DH
10 meters	Unlimited	180	30

Fire Integrity

- Up to 180 min.



Specifications

Fabric	PU-coated glass fabric, 455 g/m ² , color grey, Non - Flammable.
Unwind	Controlled Gravity Descend
Windup	24 VDC motor integrated with planetary gear
Installation	Ceiling or wall mounted
System dimensions	System width ≤ 25000 mm Unwinding length ≤ 10000 mm
Head box	GI Sheet 1.2 mm powder-coated
End section	GI Sheet 2.5 mm powder-coated
Classification/Standard	EN 12101 / UL 1784
Side guides (SFS)(Optional)	Steel 2.5 mm powder-coated, dimensions (W x D) 50 x 100 mm. The curtain material will be delivered with a restrain system. In this way, it prevents the curtain material being pulled out sideways from the tracks in case of deflection by pressurization (e.g. excess pressure by fire.)

Smoke containment systems prevent the spreading of smoke from one zone to another. NAFFCO curtain comprises of flexible heat resistant fabric with fire integrity up to 120mins.*. The tube contains a DC electric motor which holds the curtain retracted at ceiling level at all times and deploys upon the receipt of fire alarm signal. The bottom bar ensures safe and controlled descent of the curtain with gravity fail safe.

System tested to

- BS EN 12101-1 Annex B (Reliability, Response Time and Material Durability)
- BS EN 12101-1 Annex C (Air Leakage Test)
- BS EN 12101-1 Annex D (Fire Resistance Test)
- Fabric tested to BS 476 Pt 6 and Pt 7, EN 13501-1
- BS 8524-1:2013 Severe Duty Impact Test (with Side Guides)
- UL 10D, UL 1784

Product Complies

- Applus+
- UL

*NF-RGF0455/60

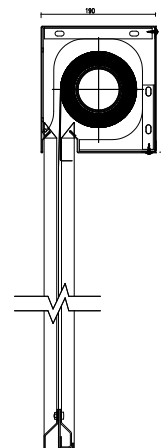
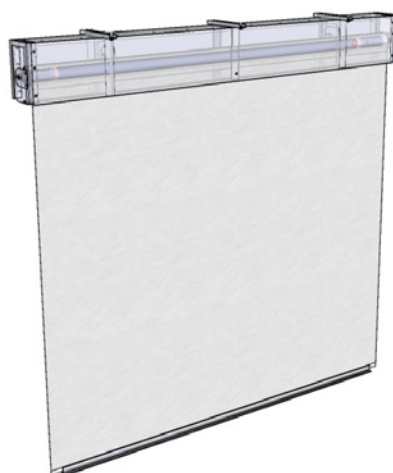
Applus⁺



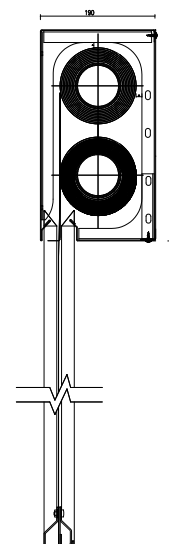
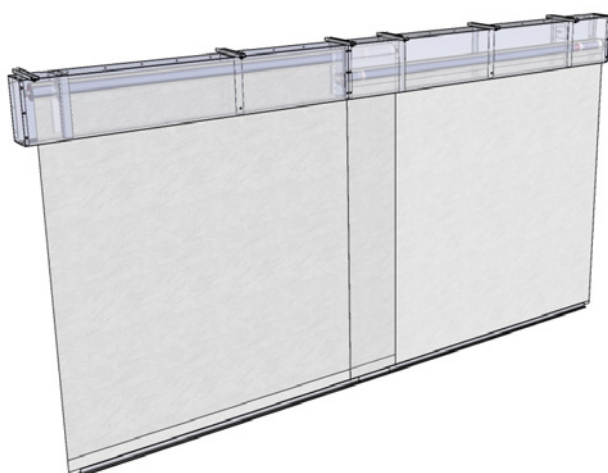
Smoke Curtain

Single & Multi Barrel

Single Barrel system - Smoke Curtain



Multi Barrel system - Smoke Curtain



Applications



Shopping Malls and Buildings



Warehouses and Logistics



Theatres and Cultural Centers



Industrial Sectors



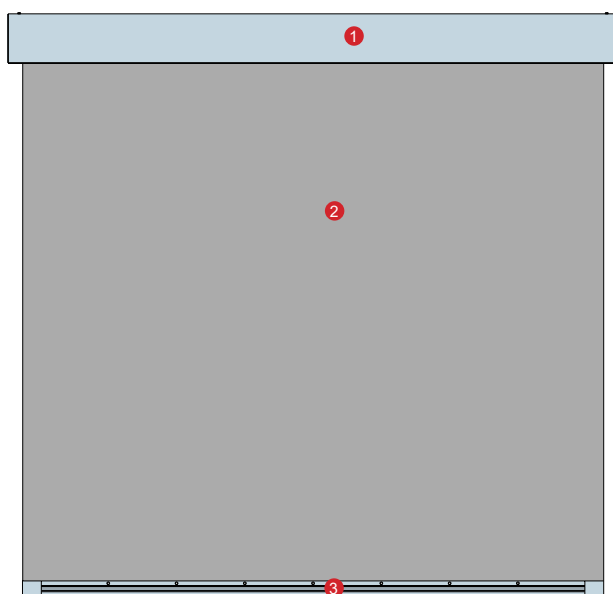
Hotels and Food Processing Sector



Oil and Gas Sector

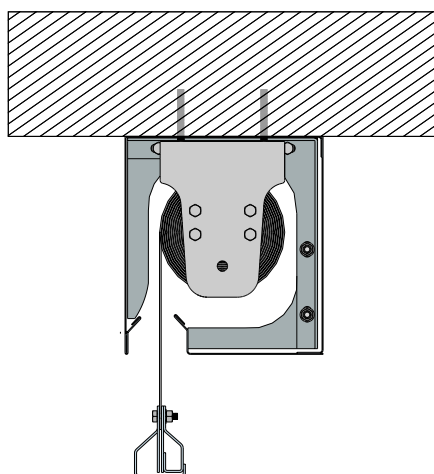
Smoke Curtain

Single & Multi Barrel

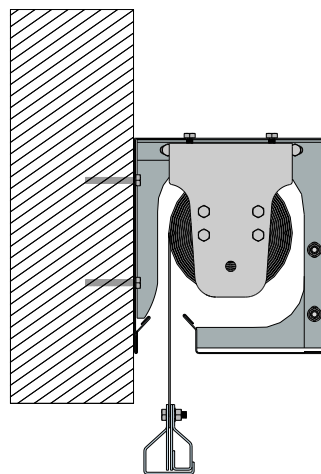


- 1.** Header Box
- 2.** Roller motor with Fabric
- 3.** Bottom Bar
- **** Side Guide Rails (optional)

Header Variants



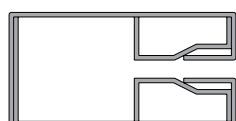
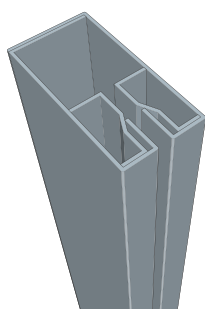
Direct fixing to the ceiling



Fixing directly to the wall

Side Guide Details

(optional)



Bottom Bar Details

