

NF-ALP-727

AERIAL PLATFORM - 72 Meters



FOR ANY ASSISTANCE,
PLEASE CONTACT
800 NAFFCO
8 0 0 - 6 2 3 3 2 6
customerservice@naffco.com
FOR OUTSIDE UAE, PLEASE CALL +971 800 623 326

Notes:

NAFFCO reserve the right to introduce minor changes to improve operational and performance related aspects of the vehicle and if also necessary to supply equivalent equipment/components if they should become unavailable or obsolete.

www.naffco.com



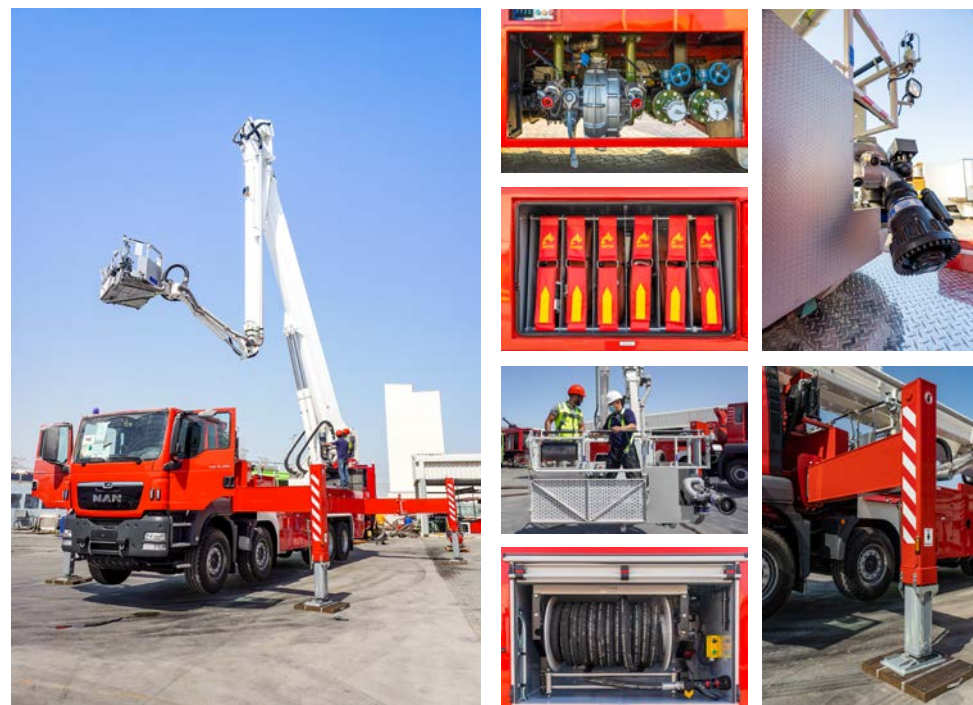
NF-ALP-727

AERIAL PLATFORM - 72 Meters

- 01 CHASSIS**
MAN TGS 41.400, 8x4 Single Cabin, Manual Transmission (MT)
Left Hand Drive power-assisted steering, Approx. 42,000 KG GVW
- 02 BODY STRUCTURE**
The structure is made of stainless steel box sections fastened on platform main frame, with single side Aluminum sheets panelling.
- 03 STORAGE LOCKERS**
There are storage lockers on left and right sides of the vehicle.
- 04 AERIAL PLATFORM**
Highest Platform in the Range
Working Height: 72 m
- 05 RESCUE CAGE**
Cage Dimension: 2.2. x 1.2 x 1.1 meters, Weight Capacity: 500 kg.
- 06 OUTRIGGERS**
4x nos. H-Type
- 07 FIRE PUMP**
Centrifugal type, normal pressure pump with automatic priming system, Rate capacity of up to 6000 LPM at 10 bar,
- 08 HOSE REEL**
25 - 30 metres of normal pressure hose reel, complete with semi-rigid normal pressure rubber hose (non collapsible rubber), Rate Capacity of up to 400 LPM.
- 09 CAGE MONITOR**
Water / Foam Monitor with Jet / Fog Nozzle Flow Rate of up to 1000 GPM.

ACCESSORIES

Wide range of fire fighting accessories and equipments and rescue tools can be provided.



Notes:

NAFFCO reserve the right to introduce minor changes to improve operational and performance related aspects of the vehicle and if also necessary to supply equivalent equipment/components if they should become unavailable or obsolete.

www.naffco.com

