

# EMERGENCY RESPONDER

## NAFFCO TRAILER MOUNTED FOAM/WATER MONITOR



The Emergency responder is a trailered foam or water delivery unit and high capacity portable monitors to a new level of performance and significant enhancements in operation and foam performance. Portability and quick setup make the best firefighting monitor package available to use anywhere.

The monitors are trailer mounted and trailer is having four wheel tyres and rotatory wheel at front for easy maneuverability by two persons or pulled behind a light truck or jeep with the help of towing eye. The trailer have four stabilizer legs and wheel locking system to ensure stability during operation. Low profile design provides low center of gravity for enhanced operational stability to meet special customer requirement.

Trailer design shall be modified to meet flow requirements up to 4,000 GPM (please refer NAFFCO monitors models) The unit consists self-inducting or non-self inducting fixed or adjustable flow nozzle technology enables the most effective and flexible in fire attack. Suitable for use with fresh water, sea water, protein, fluoroprotein, AFFF, and AR-AFFF foam concentrates. Excellent nozzle range, ease of operation, and superior foam performance. The non-self inducting nozzle shall be use with pre-mixed foam solution. The dual gear or lever operated monitor can be easily and safely controlled by a firefighter for pan and tilt. The platform provides the operator the freedom of smooth, rapid horizontal and vertical movement and a maximum articulation of 360°, making this trailer a superior weapon in fighting large-scale industrial fires and mitigating other extremely challenging hazards.

### FEATURES

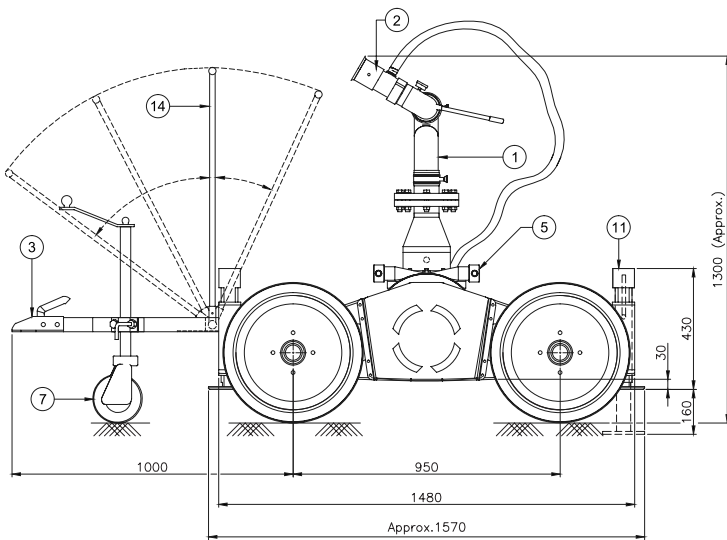
- Selectable flow rates Optimized for maximum range Soft pattern for tank shell cooling,
- 360° rotation Choice of any inlet hose adapters Can be used with fresh or salt water

### APPLICATION

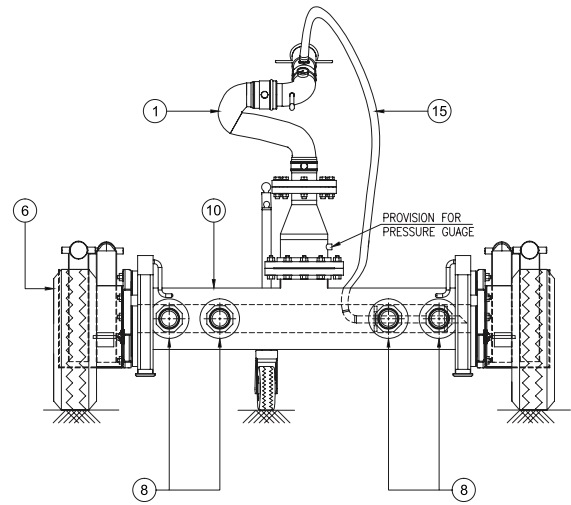
- Tank Farms Helipads, Helidecks Fireboat Warehouses Offshore Drilling Rigs
- Hangers Drum Storage Facilities Loading Racks Docks, Piers Chemical Carriers

### ORDERING INFORMATION

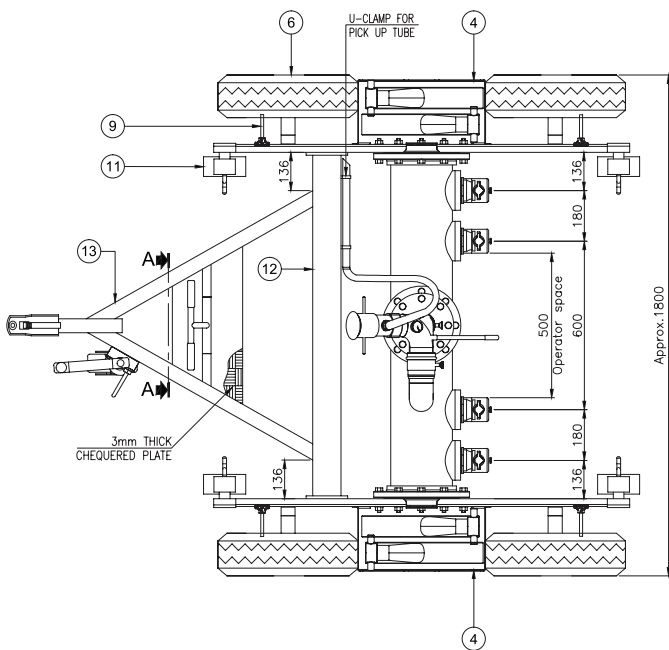
- Monitor and nozzle flow Self-Inducting or Non-self inducting material of construction
- Type and Size of Inlet connection Fire hose type and size (optional)



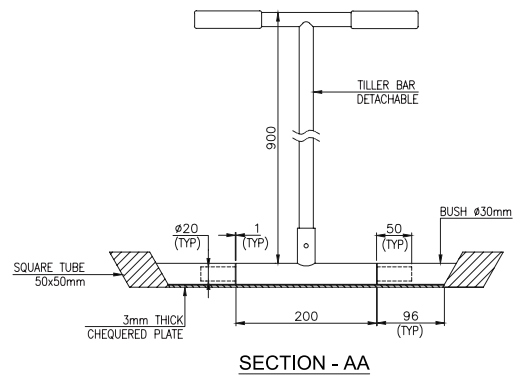
FRONT VIEW



RH. SIDE VIEW



TOP VIEW



SECTION - AA

1. Fire Monitor
2. Monitor nozzle (as per customer requirement)
3. Tow Ball Coupling
4. Fire Hose Storage Rack
5. Fire Hose
6. Rear Wheel
7. Rotary Wheel
8. Manifold Inlet-BS male with cap
9. Wheel Locking Mechanism
10. Manifold pipe 8"
11. Telescopic Proper Stand
12. MS. Square Tube
13. MS. Square Tube
14. Tiller Bar-Detachable
15. Pick Up Tube 3/4"

# FOAM TRAILER

## MODEL: NF FT SERIES

### DESCRIPTION

NAFFCO NFFT Fire Terminator Foam Trailer comes with a stainless steel foam storage tank along with a high performance foam water nozzle or branch pipe with pickup tube. These tanks are made of SS 316L or in a palletized intermediate bulk container (IBC) as shown in the figure below. The Fire Terminator comes with a tank capacity ranging from 300 to 2000 liter. This portable trailer provides a variety of option with plenty of flexibility and fire power. It allows you to pick, choose and custom build to suit your requirements. The fire hose box which is located in the back of the trailer provides sufficient space to place the hoses and required accessories. The fire Terminator is designed for easy moment and is deployed in harsh operating conditions. The fire terminators are used as a supplementary unit for fixed tank protection.

### MAINTENANCE

Periodic inspection of the nozzle must be done for possible damage or dirt around the moving parts. If any abnormalities are observed such as excessive wear and tear, poor discharge, water leak, damage etc, then nozzle must be taken out and serviced. The performance of the nozzle will be affected due to the presence of debris trapped in the nozzle. Clean the nozzle and reassemble the same. While re-assembling the nozzle, water proof lubricant must be applied on the seal and moving parts for very smooth operation. It is recommended to always place the foam tank in a shady area or covered from direct sunlight. It is recommended to annually test the foam concentrate or solution for changes in constitution or characteristics and the formation of sediment or precipitate.

### CAUTION

It is advised only trained firefighting personnel, with appropriate guidance should use this product to reduce the risk or injury. Care need to be taken while fixing the nozzle on to the monitor, mismatched or damaged threads may cause leakage or uncouple the nozzle during operation. Avoid the usage of water or foam on live electrical equipment.

The water supply to the nozzle should be slow and sturdy. Avoid sudden surge of water supply on to the nozzle. The mounting of the monitor must be supported properly to avoid back pressure.



### FEATURES

- Branchpipe is provided with shut off ball valve for better stream control and is designed to give constant flow pattern.
- Hard rubber tires improves reliability for rapid deployment
- Light weight Fire hose 1½" dia and 15m length
- Foam Tank internally coated with polyester resin
- Provided with three wheels, of which the front one is rotary type for easy handling and mobility

### OPTIONS

- Fire hoses in special lengths for connecting to water supply
- Special Branchpipes with fog & stream patterns
- Special cover made of synthetic rubber coated fabric
- Foam Tank made of Stainless Steel 316L
- Higher Tank Capacities Available

### TECHNICAL DATA

Foam Tank	300-2000 Liters
Material of Construction	SS 316L
Nozzle	Foam/Water Branch Pipe
Foam Concentrate	AFFF 3%, 6%
Wheel	3 Wheels /5 Wheels

