



## Listed Aboveground Diesel Tank





## AN INTRODUCTION TO NAFFCO

NAFFCO was founded in Dubai, UAE to become the world's leading producer and supplier of life safety solutions. By recognizing the importance and convenience of having easy access to multiple safety services, we became specialized by offering complete solutions under one roof for all types of high quality firefighting equipment, fire protection systems, fire alarms, addressable emergency systems, security systems, custom-made vehicles such as fire trucks, ambulances, mobile hospitals and airport rescue firefighting vehicles (ARFF).

With the most talented and dedicated employees from around the world, NAFFCO has over 500 passionate engineers and over 5 million square feet of manufacturing facilities. We are currently exporting to over 100 countries worldwide.

Our products have been consistently certified by UL, FM, BSI, LPCB and Global Mark according to the latest International Quality Standard for their strict adherence to ISO 9001 quality management system and certified for ISO 14001 environmental management systems and BS OHSAS 18001 for occupational safety by UL DQS.

Our success is driven by our passion to protect; our vision is to become the world's number one provider of innovative solutions in protecting life, environment and property.



NAFFCO  
OHSAS 18001 | ISO 14001 | ISO 9001  
20002009



Assessed to ISO 9001  
Certificate No: 463



FM615437



CERTIFICATE NO:463  
(Ref redbooklive.com)



# ABOVEGROUND FUEL TANK

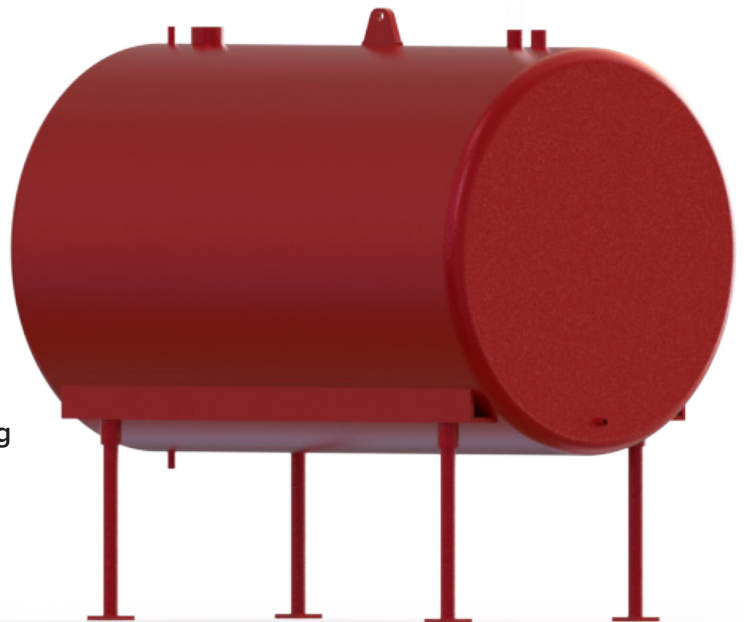
NAFFCO certified primary containment tank offers you a reliable solution for your fuel storage requirements. Design and fabrication of these tanks are done as per UL standard (UL 142), and installation and use shall be in accordance with NFPA 30. Each tank is subjected to thorough structural inspections and leakage test as specified by the design standard. The tanks that successfully pass the inspection and test are labelled as per UL specifications confirming their UL certification. These cylindrical, horizontally mounted, tanks are provided with necessary fittings and

openings to facilitate quality service at field. All tanks are provided with openings for filling, connecting to diesel engine fuel system, fuel return line connection and drain. Lifting lug, provided on the top center of the tank, facilitates easy transportation and installation. These tanks are also provided with opening for connecting to a direct reading fuel level gauge that is supplied as part of standard fire pump package.

## DIESEL TANK

### FEATURES

- Meets NFPA 30 requirements.
- Sized as specified by NFPA 20 for fire pump applications.
- Designed and Fabricated in accordance with UL 142 (Steel Aboveground Tanks for Flammable and Combustible Liquids) standard .
- Tested for tightness against leakage.
- Top quality fittings and fabrication materials.
- Sturdy lifting lug and legs.
- Vent opening to prevent build-up of pressure or vacuum inside the tank during filling, emptying or due to atmospheric temperature changes.
- Approved welding process.



Applicable welding processes are Gas Metal Arc Welding (GMAW) and/or Shielded Metal Arc Welding (SMAW). Shell, Dish Head and Lift Lug material is carbon steel, ASTM A36 and legs shall be of carbon steel pipe, ASTM A53. Standard height for the tank leg is minimum 500 mm.

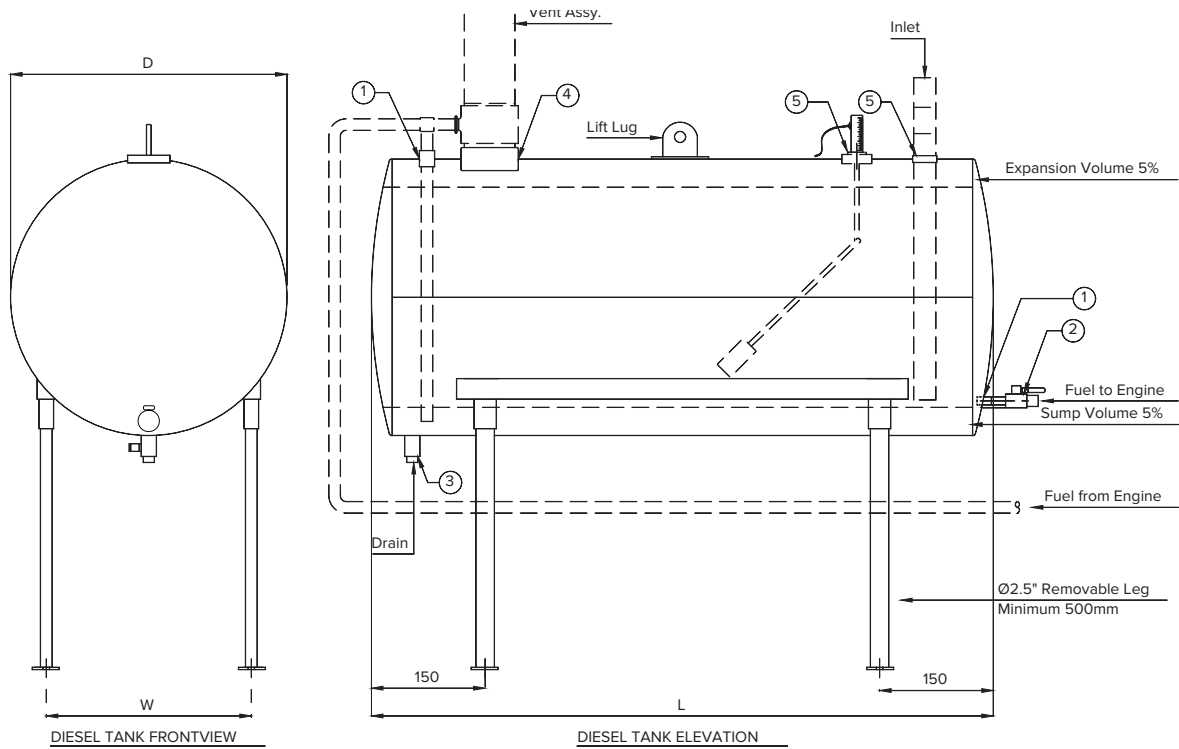
### NOTES

- Fuel tank outlet must be even with engine fuel pump centerline.
- Fuel tank should be located as close to engine as possible.
- Fuel tank should have a slope of 6 mm per foot towards drain plug.
- The usable volume of the fuel tank is 90% of the total fuel tank volume.
- All pipe lines should be inspected thoroughly to ensure that joints are leak free.
- Fuel tank should be cleaned periodically and fuel level should be checked weekly for fire pump applications.

### WARRANTY

The subject tank is warranted by NAFFCO to be free from defects in manufacturing, workmanship and materials. NAFFCO Tank will repair or replace, at its sole discretion F.O.B. factory, within a period of one year after date of shipment, any item of our manufacture.





## FITTINGS

FITTINGS			
ITEM	DESCRIPTION	MATERIAL	QTY
1	1/2" Nipple	Carbon Steel	2
2	1/2" NPT Ball Valve	Brass	1
3	1/2" NPT Plug for Drain	Carbon Steel	1
4	4" Nipple for Emergency Vent	Carbon Steel	1
5	2" Nipple for Filling	Carbon Steel	2

## DIMENSIONS

DIMENSIONS			
CAPACITY (GALLONS)	LENGTH (L)	DIAMETER (D)	WIDTH (W)
50	800	600	430
70	1065	600	430
150	1275	800	575
250	1355	1000	720
310	1465	1070	768.5
350	1655	1070	768.5
400	1890	1070	768.5
450	1690	1200	900
500	1875	1200	900
600	2245	1200	900
750	2805	1200	900

ALL DIMENSIONS ARE IN MM UNLESS OTHERWISE INDICATED

# ABOVEGROUND FUEL TANK

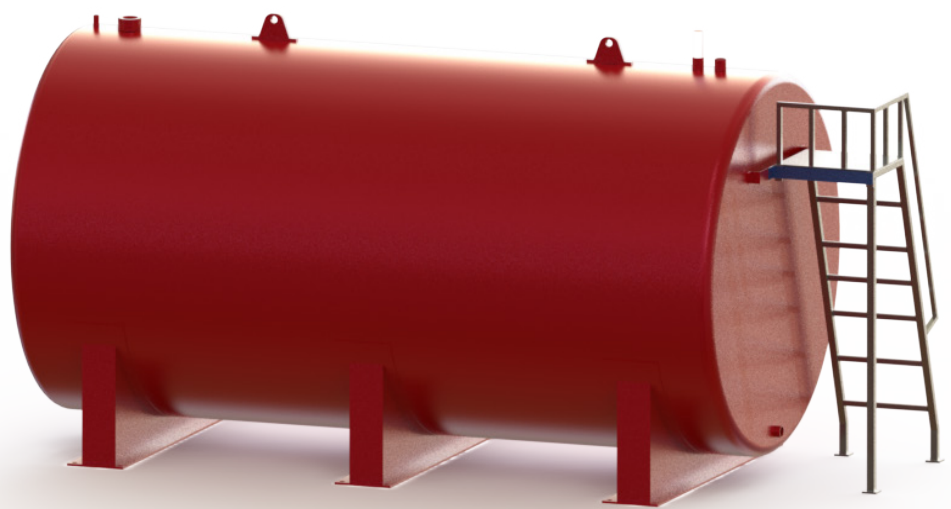
NAFFCO certified primary containment tank offers you a reliable solution for your fuel storage requirements. Design and fabrication of these tanks are done as per UL standard (UL 142), and installation and use shall be in accordance with NFPA 30. Each tank is subjected to thorough structural inspections and leakage test as specified by the design standard. The tanks that successfully pass the inspection and test are labelled as per UL specifications confirming their UL certification. These cylindrical, horizontally mounted, tanks are provided with necessary fittings and

openings to facilitate quality service at field. All tanks are provided with openings for filling, connecting to diesel engine fuel system, fuel return line connection and drain. Lifting lug, provided on the top center of the tank, facilitates easy transportation and installation. These tanks are also provided with opening for connecting to a direct reading fuel level gauge that is supplied as part of standard fire pump package.

## DIESEL TANK

### FEATURES

- Meets NFPA 30 requirements.
- Sized as specified by NFPA 20 for fire pump applications.
- Designed and Fabricated in accordance with UL 142 (Steel Aboveground Tanks for Flammable and Combustible Liquids) standard
- Tested for tightness against leakage.
- Top quality fittings and fabrication materials.
- Sturdy lifting lug and legs.
- Vent opening to prevent build-up of pressure or vacuum inside the tank during filling, emptying or due to atmospheric temperature changes.
- Approved welding process.



Applicable welding processes are Gas Metal Arc Welding (GMAW) and/or Shielded Metal Arc Welding (SMAW). Shell, Dish Head and Lift Lug material is carbon steel, ASTM A36 and legs shall be of carbon steel pipe, ASTM A53. Standard height for the tank leg is minimum 500 mm.

### OPTIONS & ACCESSORIES

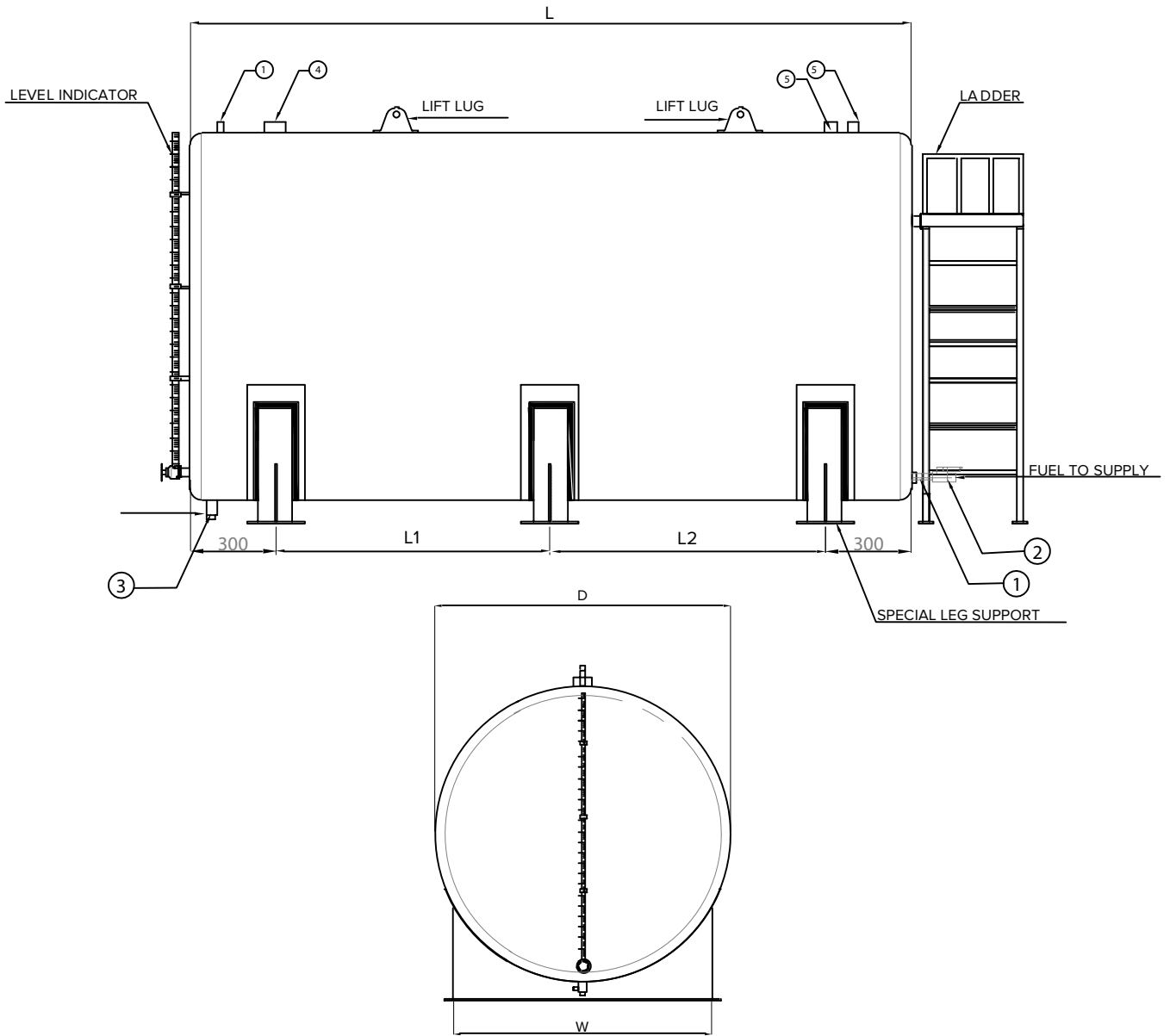
Stairs & Filling Platform  
Walkway(s) with Handrails  
Emergency Vent(s)  
Exterior epoxy primer coat

### WARRANTY

The subject tank is warranted by NAFFCO to be free from defects in manufacturing, workmanship and materials. NAFFCO Tank will repair or replace, at its sole discretion F.O.B. factory, within a period of one year after date of shipment, any item of our manufacture.

### TYPICAL USES

- Emergency Fuel Storage
- Diesel Generator Storage
- Secondary Fuel Storage



## FITTINGS

FITTINGS			
ITEM	DESCRIPTION	MATERIAL	QTY
1	1/2" Nipple	Carbon Steel	2
2	1/2" NPT Ball Valve	Brass	1
3	1/2" NPT Plug for Drain	Carbon Steel	1
4	4" Nipple for Emergency Vent	Carbon Steel	1
5	2" Nipple for Filling	Carbon Steel	2

## DIMENSIONS

DIMENSIONS				
CAPACITY (GALLONS)	LENGTH (L)	DIAMETER (D)	WIDTH (W)	LEG DISTANCE ( L1=L2)
1000	2100	1600	1400	750
1500	3145	1600	1400	1275.5
2000	2970	1900	1700	1185

ALL DIMENSIONS ARE IN MM UNLESS OTHERWISE INDICATED

# ABOVEGROUND FUEL TANK

NAFFCO certified primary containment tank offers you a reliable solution for your fuel storage requirements. Design and fabrication of these tanks are done as per UL standard (UL 142), and installation and use shall be in accordance with NFPA 30. Each tank is subjected to thorough structural inspections and leakage test as specified by the design standard. The tanks that successfully pass the inspection and test are labelled as per UL specifications confirming their UL certification. These cylindrical, horizontally mounted, tanks are provided with necessary fittings and

openings to facilitate quality service at field. All tanks are provided with openings for filling, connecting to diesel engine fuel system, fuel return line connection and drain. Lifting lug, provided on the top center of the tank, facilitates easy transportation and installation. These tanks are also provided with opening for connecting to a direct reading fuel level gauge that is supplied as part of standard fire pump package.

## DIESEL TANK

### FEATURES

- Meets NFPA 30 requirements.
- Sized as specified by NFPA 20 for fire pump applications.
- Designed and Fabricated in accordance with UL 142 (Steel Aboveground Tanks for Flammable and Combustible Liquids) standard
- Tested for tightness against leakage.
- Top quality fittings and fabrication materials.
- Sturdy lifting lug and legs.
- Vent opening to prevent build-up of pressure or vacuum inside the tank during filling, emptying or due to atmospheric temperature changes.
- Approved welding process.



Applicable welding processes are Gas Metal Arc Welding (GMAW) and/or Shielded Metal Arc Welding (SMAW). Shell, Dish Head and Lift Lug material is carbon steel, ASTM A36 and legs shall be of carbon steel pipe, ASTM A53. Standard height for the tank leg is minimum 500 mm.

### OPTIONS & ACCESSORIES

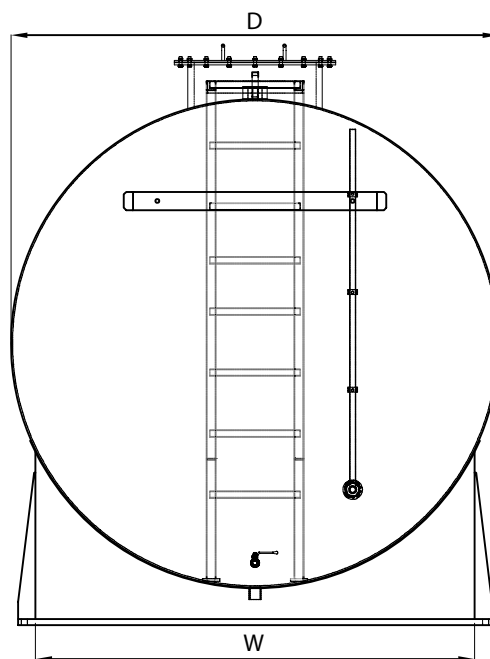
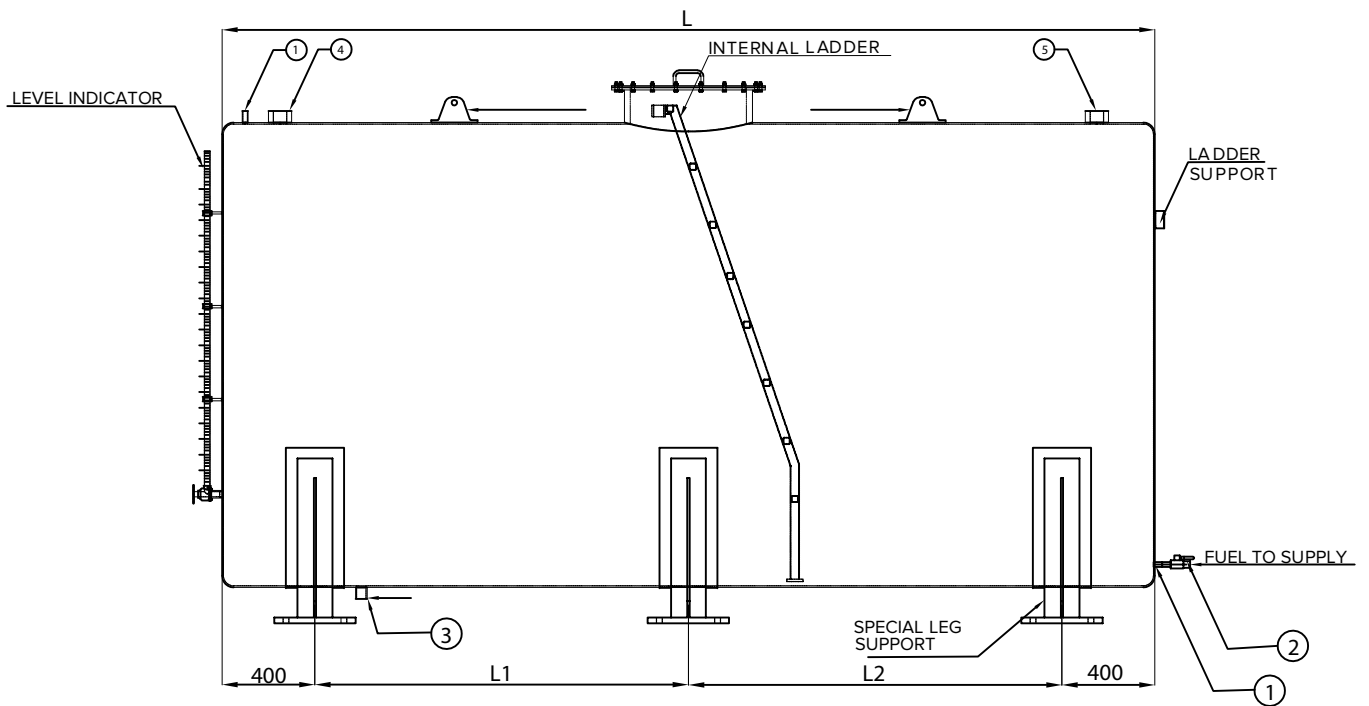
Stairs & Filling Platform  
Walkway(s) with Handrails  
External Ladder & Filling Platform  
Emergency Vent(s)  
Exterior epoxy primer coat

### WARRANTY

The subject tank is warranted by NAFFCO to be free from defects in manufacturing, workmanship and materials. NAFFCO Tank will repair or replace, at its sole discretion F.O.B. factory, within a period of one year after date of shipment, any item of our manufacture.

### TYPICAL USES

- Emergency Fuel Storage
- Diesel Generator Storage
- Secondary Fuel Storage



## FITTINGS

FITTINGS			
ITEM	DESCRIPTION	MATERIAL	QTY
1	1" Nipple	Carbon Steel	2
2	1" NPT Ball Valve	Brass	1
3	1" NPT Plug for Drain	Carbon Steel	1
4	4" Nipple for Emergency Vent	Carbon Steel	1
5	2" Nipple for Filling	Carbon Steel	2



# DIMENSIONS

DIMENSIONS				
CAPACITY (GALLONS)	LENGTH (L)	DIAMETER (D)	WIDTH (W)	LEG DISTANCE ( L1=L2)
2500	3710	1900	1700	1455
3000	4015	2000	1800	1607.5
3500	4685	2000	1800	1942.5
4000	3715	2400	2200	1457.5
4500	4178	2400	2200	1689
5000	4640	2400	2200	1920
5500	5105	2400	2200	2152.5
6000	5130	2500	2300	2165
6500	5557	2500	2300	2378.5
7000	5985	2500	2300	2592.5
7500	6410	2500	2300	2805
8000	5450	2800	2600	2325
8500	5790	2800	2600	2495
9000	6130	2800	2600	2665

ALL DIMENSIONS ARE IN MM UNLESS OTHERWISE INDICATED



Serving Over 100 Countries Worldwide

**NAFFCO**

Email: [info@naffco.com](mailto:info@naffco.com)  
[www.naffco.com](http://www.naffco.com)

In line with NAFFCO policy for continuous product development,  
NAFFCO has the right to change specifications without prior notice.

NF/AG-DT/CERT/12/22

FOR ANY ASSISTANCE, PLEASE CONTACT

**800-NAFFCO**

8 0 0 6 2 3 3 2 6  
[customerservice@naffco.com](mailto:customerservice@naffco.com)